



PROGRESS

THE NEW FREDERICK DOUGLASS MEMORIAL BRIDGE

SPRING 2020 EDITION



**FROM OUR
VANTAGE
POINT:
ALL EYES ON
THE ROAD
AHEAD.**

**ALL EYES ON
THE ARCHES**
A PEEK INTO
CONSTRUCTION
PROGRESS ON
THE NEW FDMB

**LOOKING OUT
AND WITHIN**
MEET THE
HOMEGROWN
BRIDGE BUILDERS
REMAKING
THE BRIDGE

MESSAGE FROM THE DIRECTOR

The start of 2020 is not just the start of a new decade but has come with an unprecedented shift in perspective. As visible and encouraging progress continues on the new Frederick Douglass Memorial Bridge, the District faces the weight of a global pandemic that is felt by residents of all eight wards.

Under Mayor Muriel Bowser’s leadership, we are fortunate to have an opportunity to view things differently and to prioritize what is truly important – ensuring our teams are safe and continuing our work to serve our residents.

Over the past few months, we’ve taken seriously the responsibility of maintaining public infrastructure operations and preventing the spread of coronavirus (COVID-19) at work sites.

Since Mayor Bowser first declared the public health emergency in mid-March, we have implemented safety and cleaning protocols to ensure the safety of everyone who continues to provide essential services on behalf of the District Department of Transportation. I am grateful for the team’s dedication to our city and for the support we continue to receive from our community partners.

The theme of the Spring issue is “From Our Vantage Point,” and celebrates the varied and unique viewpoints of the people, businesses, and communities closest to rebuilding the new Frederick Douglass Memorial Bridge.

In this edition, read about:

- How growing up in the District is shaping the newfound perspectives of our cross-functional bridge-building teams and what contributing to their own city represents.
- Why all eyes should be on the most distinctive and anticipated component of the new Frederick Douglass Memorial Bridge: the three above deck arches.
- What a Ward 6 waterfront pizza business sees as the most exciting opportunity when the bridge reopens and why they’re looking forward to a new viewing experience for their patrons.

Let’s shift the way we view our work, together.

With optimism,



Jeff Marootian

Jeff Marootian
DIRECTOR, DISTRICT DEPARTMENT OF TRANSPORTATION

**"Where there
is no struggle,
there is no
progress."**

FREDERICK DOUGLASS

TABLE OF CONTENTS

PAGE 1

Looking Out and Within
Feature Story

PAGE 5

All Eyes on the Arches

PAGE 7

Front and Center: The All-Purpose View

PAGE 8

Aridai’s Unique Advantage

PAGE 9

In Their Words: How She Sees It

PAGE 10

A Symbolic Stance

PAGE 11

360° Social Media Snapshots



FEATURE STORY

LOOKING OUT AND WITHIN

As it turns out, building a bridge is a local thing.

The talented, passionate, experienced, and skilled workforce needed to create monumental progress - the kind required to remake the new Frederick Douglass Memorial Bridge - is and has always been in our own backyard.

This season, we're stopping to take a look within the District, recognizing and celebrating the unique vantage point of our incredibly diverse bridge builders who are, by all definitions, homegrown.

With roots across all eight wards and present day lives just as diverse as their neighborhoods, one theme reigns true for them all:

Working to rebuild a bridge that holds over half a century of history for our nation and our capital is personal.

EYES WIDE OPEN

When it comes to our city's **evolution**, Tina Boyd, Principal of Tina Boyd & Associates (TB&A), the communications consultancy that supports the new Frederick Douglass Memorial Bridge project, sees it all as "breathtaking."

"What's changed the most is the demographics, economics and expanding culture and social environment," she shares. Her business partner, Kimberly Manning, also Principal of TB&A, describes the growth as **"one fast-paced development that she's proud to be a part of."**

"It's been EYE-OPENING to experience D.C. change from a crime-ridden city to one of the most sought-after places in the country to live," says Modibo Hylton, Civil Engineer Technician on the new FDMB project. From his vantage point, the change has been a noticeable shift for the city he calls home to now be known for its **"business-friendly environment, restaurants, shopping, and valuable real estate."**

For Ariel Sayre, Scheduler at HNTB, the construction program manager supporting the District Department of Transportation (DDOT) on the New FDMB project, being a D.C. resident means **"being part of so many passionate and inspiring communities!"** Through the eyes of Modibo, each one of those communities serves to make up **"a blended city that is [undoubtedly] on-the-move with endless potential."**

HOW WE SEE IT

Ask our residents-turned-public-servants to describe D.C. in one word, and this is what you'll hear.

TRANSFORMATIVE

Tina Boyd

VIBRANT

Ariel Sayre

IDIOSYNCRATIC

Daniel Wright

RESILIENT

Modibo Hylton

BUSY

Kimberly Manning

FABULOUS

Philip Pannell

COMPELLING

Michael Stevens

VOICELESS

Lisa Taylor

INTERNATIONAL

Errol Williams



What makes it all feel like home?

"Close proximity to everything, a strong sense of community, and mambo sauce"

- Errol Williams,
Project Civil Engineer, DDOT

"The people, the neighborhoods, and the community meetings."

- Philip Pannell,
Ward 8 Anacostia
Coordinating Council's
Executive Director
and Member of the QCC
(Quarterly Communications
Committee)

"Inherent walkability, Eastern Market on the Hill – the social heart of my community, and The Anacostia River – one of my "zen" spaces."

- Michael Stevens,
Capitol Riverfront BID
(Business Improvement
District) President and
QCC Member

"Low-rise buildings, culture, and family."

- Daniel Wright,
Co-Founder,
GOOD Projects

"Neighbors, friends, and hospitality."

- Lisa Taylor,
Board of Directors for the
Southwest Neighborhood
Assembly and QCC Member

In Lisa's words, **"D.C. is really a southern city but that sometimes gets lost in conversation about what makes up our city's identity. Long-term D.C. residents are the nicest and most hospitable people you'll ever meet!"**

PERSPECTIVE SHAPES PROGRESS

Progress – a word as diverse in meaning as it is in its usage throughout history. This is how our District bridge builders – both literal and figurative – define it.

"Opportunity" – Tina Boyd

"Going forward, moving toward a common goal in unity and succession." – Kimberly Manning

"Building on the past, together, so that we can have a stronger, more equitable future." – Ariel Sayre

"Advancing towards an objective or goal without intentionally impacting others in an adverse way." – Daniel Wright

"Moving in the right direction..." – Michael Stevens

"Creating solutions to help all residents, regardless of race and

economic status, to develop their potential to the fullest." – Philip Pannell

"Working hard to remain an inclusive and diverse city where people of all ages, races, backgrounds, and income levels can live and raise a family if they choose." – Lisa Taylor

"It is rewarding to see such a beautiful bridge being built that has great functional and symbolic significance. I firmly believe in volunteering and giving back to the community in which you live and work. The Frederick Douglass Memorial Bridge project is a cool

opportunity to be a resident and citizen of D.C." – Michael Stevens

"Never have I been involved in such a massive project so close to home. Pride is what I feel most." – Modibo Hylton

"I feel empowered that a Ward 8 resident is at the table." – Philip Pannell

"I'm proud to be a part of something that's going to be such as an asset not just to my community and the city, but also to the memory of Frederick Douglass." – Lisa Taylor

FROM DAY-TO-DAY

From native Washingtonians to recent transplants, each plays a role in rebuilding a city they're proud to call "home."

Here's a snapshot of just three seemingly opposite posts:

For Modibo Hylton, arriving at his role on the new Frederick Douglass Memorial Bridge project came by the hand of a fellow native, Joseph Dorsey. Modibo is now proudly responsible for observing and reporting any concerns about work conducted to the QA and QC (Quality Assurance and Quality Control) companies hired as inspectors of the project. It's a post he's known to take quite seriously.

Errol Williams takes on the important task of reviewing the design builder's submittals, requests for information (RFIs), and maintenance of traffic (MOT) drawings. Coordinating with and managing local, state and federal agencies requires a knack for negotiation that Williams credits the hustle and bustle of the District for helping him master.

Still, with each new day comes the challenge of relying on each other to get the job done.

"The project is ambitious in scope and it takes a large team to manage it. It has been such a learning experience to engage with a number of different team members [to achieve the goal]," says Ariel Sayre.

LOOKING OUT TOWARD THE FUTURE

When the day of completion comes, the years of complexities from collaboration, the day-to-day on-site challenges, and the steadfast focus on the goal will all be well worth it. Along with the residents they pledged to serve, they'll drive over the New Frederick Douglass Memorial Bridge with more pride than most, reflecting on the past, present and future of a city's legacy some were born into, and some proudly carry the torch through. Here's what they're most looking forward to:

"Greater connectivity and cultural integration." – Tina Boyd

"The beautiful arches and the community-wide celebration!" – Kimberly Manning

"Scenic views from the bridge and excitement from the community." – Errol Williams

"A walkable path connecting both sides of the river." – Daniel Wright

"A gateway to the city and a new connection between neighborhoods." – Michael Stevens

"Walking across the bridge and visiting the east and west ovals." – Philip Pannell

"Crossing the bridge on my bike in a more safe and comfortable way." – Lisa Taylor

On that very first ride, Ariel Sayre's sentiments sum up the whole of our homegrown team's view on the future: **"hopeful, proud, and excited."**

INFORM SCHEDULE

LIAISON

NEGOTIATE

CURIOUS ABOUT HOW ARCHES ARE INSTALLED?
HERE'S A QUICK VISUAL GUIDE:

- 1

Arch segment is delivered on a heavy haul truck.
- 2

Once the truck arrives at the site, the arch segment is unloaded and staged on the ground.
- 3

Arch segments delivered on its side are lifted and moved into the upright position for staging.
- 4

We prepare arch for erection by adding fall protection, tools and other materials.
- 5

Construction crew hoists arch segment into place and bolts it to the concrete or previous segment.
- 6

Once the arch piece is bolted into place, it is released from the crane.

ALL EYES
ON THE
ARCHES

For the first time since construction began in early 2018, residents of the Washington, D.C. metropolitan area are able to see clear, visible signs of progress on the New Frederick Douglass Memorial Bridge from multiple viewpoints throughout the region.

Work began on the most distinctive and anticipated component of the bridge – the three above deck arches – in late 2019 with the installation of the first segments. As of mid-March 2020, two of those arches, which are designated as the West Arches, were fully erected. The East Arches will be completed in May, followed by work on the Center Arches.

The main concrete work of the new bridge substructure, which includes the pier, abutments and foundation, is also now complete. Expected completion of the arches is estimated for late summer/early fall 2020, which is when the next phase of construction on the bridge's superstructure will begin. The superstructure includes the bridge deck and suspension cables.

"The emergence of COVID-19 has provided unique challenges for our team, alongside the whole country, as we work to keep our people and community safe. Despite these challenges, the bridge construction schedule has not been affected by the pandemic," states Adam Hollon, New FDMB Project Manager.

The anticipated timeline for the completion of the bridge is currently Fall 2021. The entire South Capitol Street Corridor project will be completed by Spring 2022.

For any major traffic impacts from construction, please visit the Traffic Advisories section of our website at www.newfrederickdouglassbridge.com.

FRONT AND CENTER: THE ALL-PURPOSE VIEW



In this Local Business Highlight, we feature Ward 6 neighborhood gem, All-Purpose Riverfront. This Capitol Riverfront restaurant is known for serving mouth-watering pizzas and front row views of the New Frederick Douglass Memorial Bridge. An interview with Gareth Croke, one of the restaurant's owners, provides an important viewpoint from the business community on how this bridge will make a positive economic impact on the neighborhood.

What made you decide to open your All-Purpose Riverfront restaurant?

All-Purpose is the result of two restaurant groups coming together. After having success with Boundary Stone, Red Hen and the All-Purpose Shaw restaurant, the Capitol Riverfront location seemed like a wise move. Some friends tipped us off to the potential space that would allow us to have a waterfront restaurant across the street from a major sports stadium, and it just made sense.

How is this restaurant different from the others in your restaurant group?

The culture of the riverfront location is very communal just like Shaw. There's a large outdoor patio and rooftop bar, which lends itself to larger crowds due to the proximity to the stadiums. It's also airier and the windows open to a patio, which opens to a river, so it's a spectacular view.

What most excites you about the opening of the New Frederick Douglass Memorial Bridge?

Before opening the restaurant, we extensively researched the neighborhood so we knew the bridge was slated to open. I love the renderings and I'm excited for the walkability the bridge will offer. We are sort of in a "no man's land" at the end of the boardwalk so when it opens and crosses over to Audi Field and Buzzard's point, it will open up more possibilities for us. I also love that there's a new

planned green space that will be more exercise-friendly for those of us in the neighborhood. And of course our restaurant will have a nice front row view of this cool-looking bridge.

What inspires you about Frederick Douglass?

He's an example of perseverance and personal courage, rising up from slavery to be a leading voice in our country. His leadership, which is his legacy, is inspiring. The fact that his legacy has lasted this long – having a bridge named after him – is pretty cool. The inspiration he offers to me as an entrepreneur puts everything into perspective, considering the times we're in right now.

From your vantage point, as a District business owner and neighbor of the bridge, how do you see the bridge benefiting residents and businesses the most? How do you see it bringing about progress for the District?

As a resident of the Bloomingdale neighborhood and an owner of a neighboring restaurant, I'm proud to see a project like this in the District. I think it will add a cool architectural feature to the area and with the two stadiums and retail and residential additions, this will only serve as an additional benefit.

"During the midst of this global health crisis, we are doing our part to keep the community going. Hopefully we can keep them fed and sane, and they can keep us in business."

Fun Fact

If he were to describe D.C. in one word, it would be "home." Gareth moved around a lot as a child due to his father's occupation in the hospitality industry. He's now lived in D.C. longer than anywhere he's lived in his life combined.

ARIDAI'S UNIQUE ADVANTAGE

In this issue's DBE (Disadvantaged Business Enterprise) spotlight, we feature the owners of Aridai Consulting, Ruth LaToison Ifill and Keil Ifill. As residents and business owners who operate in the District, this couple offers a unique perspective on what building this bridge means for them and their family. As a DBE that focuses on developing business solutions ranging from human resources to compliance work on the New Frederick Douglass Memorial Bridge (FDMB), their important work touches both the construction of the bridge and the community in which they live.

Ruth and Keil, a husband and wife team who are residents of the Fort Dupont neighborhood in Ward 7, started Aridai in 2017. Their goal was to provide business solutions to support small businesses in the District like themselves. Their human resources services also support the hiring of residents from Wards 6, 7 and 8 on projects like the New FDMB.

"What is most rewarding for us is seeing the project employ and train D.C. residents, specifically the residents that the bridge directly impacts in Wards 7 and 8. To see the OJT (On-the-Job Training) program helping our community feels good. As a compliance organization, it's always rewarding to see that the data is not only accurate, but shows that the numbers are going up. We're actually giving back to our neighbors," states Ruth LaToison Ifill.

In their words, their work consists of, "connecting with our clients and our clients' partners to make sure they get the information they need." A large part of what they do involves building reports that are useful for local policymakers and their clients. Aridai creates data visualizations by capturing pertinent information from various data points like invoices, timesheets and workforce rosters and presenting the information in an easy-to-read format. Aridai's data visualizations allow them to partner with their clients to create data-driven solutions.

Specifically on the New FDMB project, their work involves looking for the information to verify that District residents and minority and women-owned businesses are getting opportunities to work on the project as employees or entrepreneurs. They are also responsible for conducting labor standard interviews (LSI) and other field interviews to ensure that people are being paid on time and that rates match the important work they are contributing to the bridge.

"As a DBE, this is a huge opportunity for our entrepreneurial goals and running this business as a family is extremely rewarding. It allows us to make a direct impact for our children and for the children of other businesses East of the River. When we think about improving access to opportunity and resources, being able to give back to people we love and our broader community in this way is pretty cool," shares co-owner Keil Ifill.

Aridai also performs diversity equity inclusion work and consults for nonprofits and religious institutions on how they can become more inclusive. Additionally, they conduct organizational development and strategic planning for businesses that have a specific goal they want to accomplish or a new vision that needs to be developed.

As a neighbor of the bridge project and a small business having an opportunity to work on the project, they have a unique vantage point from which they see progress.

"There is always great potential for economic growth when pathways and connections between communities are improved. With intentional efforts to increase startup funding and reduce barriers to entrepreneurship, this bridge - named after a notable social reformer - has the potential to create a new pathway for marginalized communities in our city to have access to business opportunities and grocery options. Ultimately, this can increase economic development and build generational wealth for the leaders and families that are still being left behind," states co-owner Ruth LaToison Ifill.



Fun Fact

One day when the Ifills went out for a birthday trip on a small boat underneath the bridge, they had a realization. "In the middle of the conversation we realized this is our bridge. It's cool to say that it belongs to us."

IN THEIR WORDS: HOW SHE SEES IT

Meet Tina Whitlow, a resident of the Deanwood neighborhood in Ward 7 who owns The Whitlow Foundation, a District-based public charity that creates opportunities for children interested in the culinary and creative arts. As a native Washingtonian who has a passion for giving back to her community, she is particularly excited about the building of the New Frederick Douglass Memorial Bridge (FDMB) and the opportunities and progress that it will bring to her city.

An artist by trade, Tina comes from a family of musicians and artists. She recalls learning how to draw before she could write and saw introducing the arts to her peers as an outlet. Before starting her foundation, she worked in the child abuse protection field for eight years, motivated to help by what she experienced growing up in underserved communities. She witnessed an interesting dichotomy in her field: the organizations that receive an abundance of resources do very little with what they're given, while those that receive very little find ways to do so much more. That reality inspired her to start the Whitlow Foundation.

The Whitlow Foundation, which she co-founded with her business partner Chef Shawn Lightfoot in 2018, has a mission to enable youth, young adults, and adults to reach their full potential through culinary, nutrition and arts education. They also work to create opportunities to inspire entrepreneurship, mentoring and support in their community. Fundraising is a crucial part of the Whitlow Foundation's efforts, as one of their programs, "Tools of the Trade" offers a scholarship to provide students ages 17-22 attending an art or culinary institute with professional tools and supplies needed for their craft.

Tina and her partner also created "Artscape D.C.," a series of indoor and outdoor workshops where art and creative activities can be used as an outlet for underlying issues that plague the artistic expressions and creativity in their community. She used her background and experiences working in underserved neighborhoods to help participants learn different ways to cope with trauma by communicating through the arts. She started Artscape D.C. in Ward 6 and now operates the program in all four quadrants of the city.

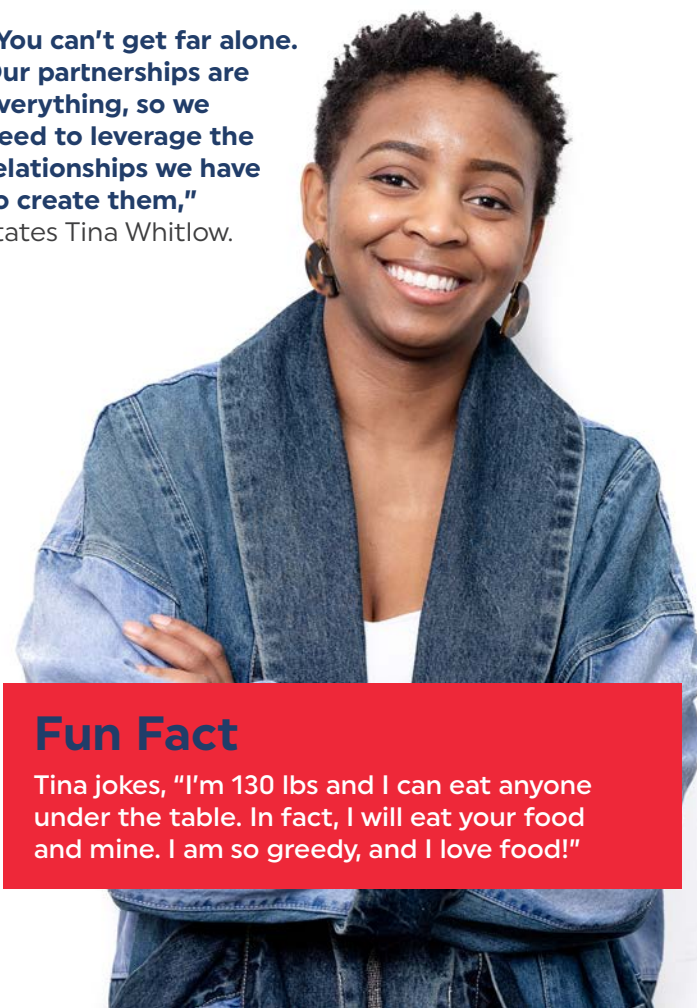
From her perspective, she sees the New FDMB bringing about progress to the District by creating new pathways between organizations on both sides of the Anacostia River. She envisions interesting and unique opportunities

to come together to serve the underserved communities through community education.

"Our partnerships allow us to make a lot of what we do happen. I always preach collaboration, not competition. We can get to where we want faster, if we work together. I look forward to new partnerships and further connections from this bridge being built," states Tina Whitlow.

Just in the last two years since launching their foundation, the Whitlow Foundation has found success in working with the Living Classrooms Foundation, GOOD Projects, TB&A and several agencies, such as the D.C. Housing Authority and the D.C. Housing Finance Agency to help them to fund and run their programs. They are looking forward to expanding their programs, receiving more funding, and helping others to expand their businesses so that ultimately they reach more youth that need more volunteer opportunities. For example, currently they are working with the Anacostia BID on a new Taste Lab D.C. activation to help aspiring chefs get hired and start businesses.

"You can't get far alone. Our partnerships are everything, so we need to leverage the relationships we have to create them," states Tina Whitlow.



Fun Fact

Tina jokes, "I'm 130 lbs and I can eat anyone under the table. In fact, I will eat your food and mine. I am so greedy, and I love food!"

A SYMBOLIC STANCE: THE NEW FDMB PROJECT TEAM TOURS THE FREDERICK DOUGLASS NATIONAL HISTORIC SITE



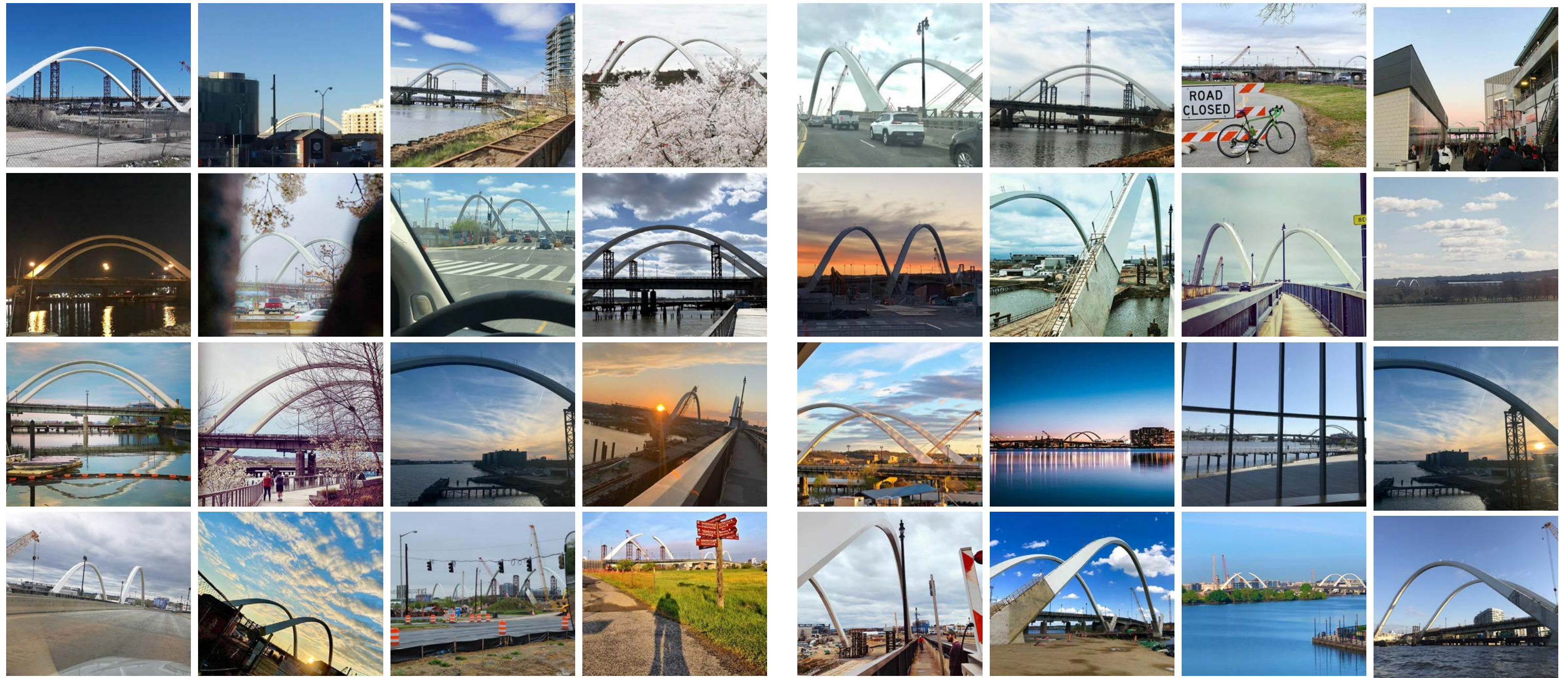
The New FDMB project team in front of the Frederick Douglass House at Cedar Hill.

In honor of Black History Month and the birthday of the project's namesake, the project team visited the Frederick Douglass National Historic Site. Frederick Douglass' estate, known as "Cedar Hill," is located in the Anacostia neighborhood in Ward 8 and it is where Frederick Douglass lived the last nearly two decades of his life. The main attraction of the site is the historic house, which is furnished with many of Douglass' original belongings and sits on top of a 50-foot hill overlooking the city.

The project team, which comprises professionals who are helping the bridge come to fruition from civil and technical engineers to communications specialists, experienced the full tour of the eight-acre site. The tour included a viewing of a film about the life of Frederick Douglass and a guided walk-through of the house. Everyone in attendance expressed that they learned at least one new fact about the life of Frederick Douglass, which created a newfound sense of pride in being able to work on the project.

360° SOCIAL MEDIA SNAPSHOTS

With the addition of new arches, we've gained new vantage points of the bridge across the region. Thanks to all who have tagged us on social and shared photos! Here's a snapshot of our collective #progress, through the lens of our digital community.



Featured photos by: @AnacostiaSeries, @AnnaForgieDC, @atweber, @bcherson, @billricedc, @buzzardpointdc, @Chris_Roell, @cmjhawk86, @dcborn61, @dmv.365, @inspector_bubba, @JDLand, @JenWing1, @johncchadwick, @louisedettman, @michael_hong_music_photos, @mjs73, @seb_roa, @tempehpboy, @theblkmsmonroe, @us3r, @VincentMorris, Millicent Hawkins, Steven Gilner Sr, @claireschneider2056, @edbirdm, @juliaroberson, @VincentMorris

HAVE ANY COOL PHOTOS TO SHARE FROM YOUR VANTAGE POINT?

Send to us at info@newfrederickdouglassbridge.com or tag us on social media @newfdmb with #FDMBVantagePoint for a chance to have your photo featured in our next issue!

THE NEW **FREDERICK DOUGLASS** **MEMORIAL BRIDGE**



REMAKING THE BRIDGE

BETWEEN
CULTURES,
COMMUNITIES,
AND PEOPLE



SPRING 2020

