



**FOR IMMEDIATE RELEASE**

January 29, 2021

**Media Contacts:**

**Lauren Stephens** – (202) 465-6112, [lauren.stephens@dc.gov](mailto:lauren.stephens@dc.gov)

**Mariam Nabizad** – (202) 359-2678, [mariam.nabizad@dc.gov](mailto:mariam.nabizad@dc.gov)

## **South Capitol Street Corridor Project Weekly Temporary Closures February 1 through February 8, 2021**

(Washington, D.C.) – The District Department of Transportation (DDOT) will temporarily close roadways, lanes, ramps and shoulders on the following corridors to perform construction activities along I-295 / DC 295 and nearby local roads. These closures are contingent on suitable weather, field conditions, and/or adjacent construction activities. Daily closures will typically take place between 9:30 a.m. and 4:00 p.m. Nightly closures will typically take place between 8:00 p.m. and 6:00 a.m. the following day (unless otherwise stated below).

Single left or right lane closures will occur anytime daily and nightly on northbound and southbound I-295 between Exit 1 (Laboratory Road / US Naval Research Lab) and I-695. Double left or right lane closures will only occur nightly until the following morning.

Single left or right lane closures will occur daily and nightly on South Capitol Street SE/SW between Firth Sterling Avenue SE and N Street SE and on Suitland Parkway SE between the Martin Luther King, Jr. Avenue SE overpass and South Capitol Street SE. These single lane closures along these two roadways will typically take place between 9:30 a.m. and 6:00 a.m. the following morning.

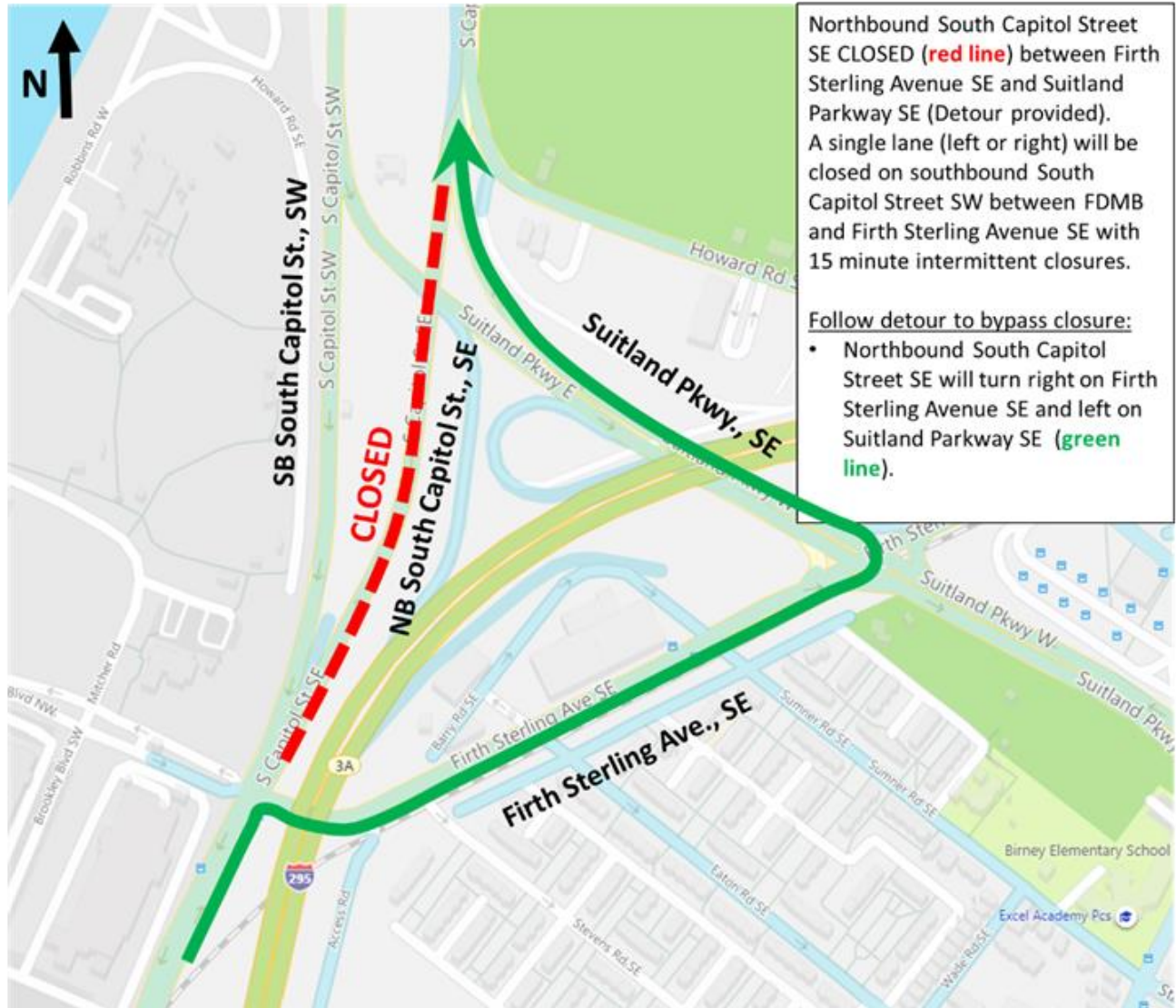
Daily and nightly single lane closures will also occur anytime on Firth Sterling Avenue SE, Potomac Avenue SE/SW, Half Street SW, Howard Road SE, Barry Road SE, and St. Elizabeth's Avenue SE.

The following full ramp closures will also occur daily and nightly.

- Exit 4 from I-295 Southbound (South Capitol Street / Suitland Parkway)
- I-295 Northbound On-ramp from northbound Firth Sterling Avenue SE

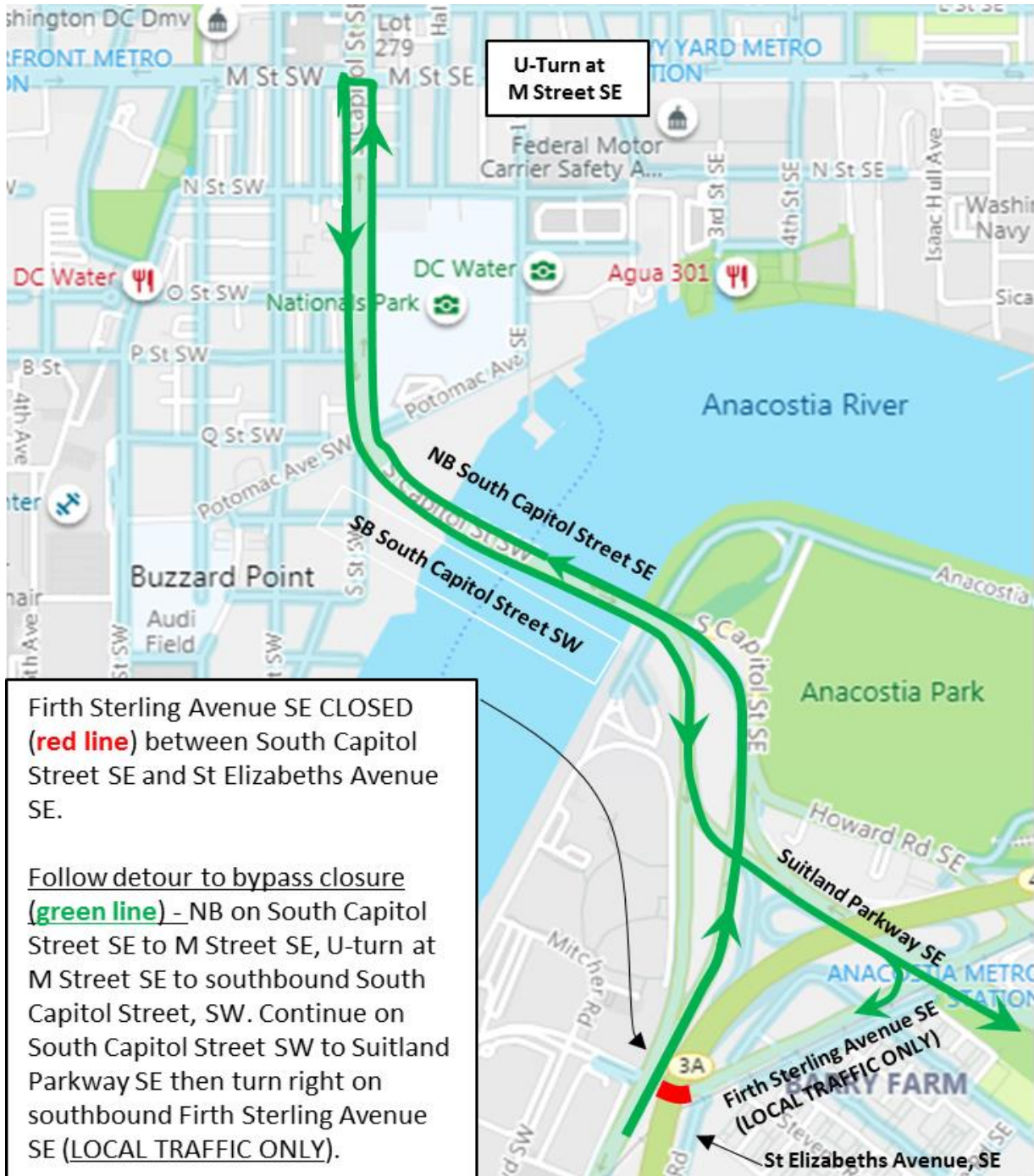
Northbound South Capitol Street SE between Firth Sterling Avenue SE and Suitland Parkway SE will be closed nightly from 8:00 p.m. to 5:00 a.m. the next morning between Monday night, February 1 and Friday morning, February 5, 2021, as shown in the graphic. A marked detour will be in place during these closures.

### South Capitol Street SE Closure & Detour



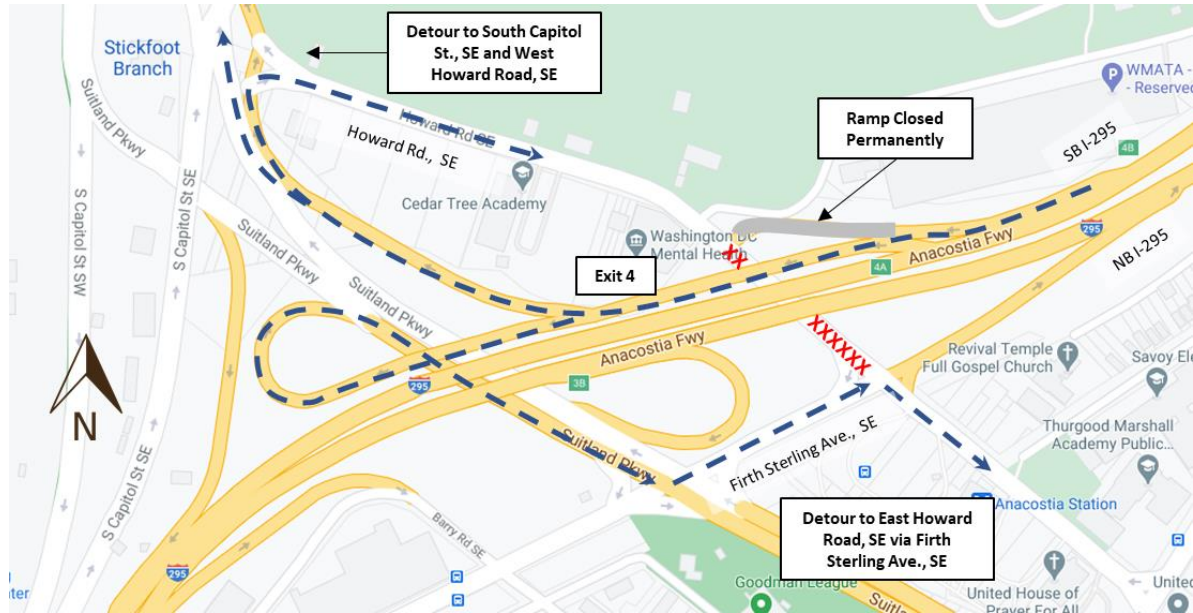
Firth Sterling Avenue SE between South Capitol Street SE and St. Elizabeth's Avenue SE will be closed during the weekends of February 6 & 7 and February 13 & 14 from 5.00 a.m. to 9.00 p.m. each day, as shown in the graphic. In the event of weather or other unforeseen delays the closure will be rescheduled to the following weekend. Weekend closures will be followed by nightly closures during the following week. A marked detour will be in place during these closures.

Firth Sterling Avenue SE Closure & Detour



Weeknight full closures will occur on Howard Road SE between the WMATA Parking garage and Firth Sterling Avenue SE. The nightly full closure of Howard Road SE will continue during the weekend starting at 8:00 p.m. Friday night, February 5 and ending by 5:00 a.m. Monday morning, February 8, 2021.

### Overnight Howard Road SE Closure & Detour



These closures are required for construction activities associated with the following DDOT project:

#### **South Capitol Street Corridor Project - Frederick Douglass Memorial Bridge**

The South Capitol Street Corridor Project calls for replacing the Frederick Douglass Memorial Bridge and transforming related sections of the urban freeway into a beautiful scenic boulevard that increases pedestrian and vehicular safety, improves multimodal transportation options, increases community accessibility and supports economic development on both sides of the Anacostia River.

For more information about DDOT’s ongoing efforts to improve the 295 corridors, visit [www.improving295dc.com](http://www.improving295dc.com).

###

For more information about DDOT’s ongoing efforts to improve the 295 corridor, visit <http://www.improving295dc.com>.

*The mission of the District Department of Transportation (DDOT) is to enhance the quality of life for District residents and visitors by ensuring that people, goods, and information move efficiently and safely with minimal adverse impact on residents and the environment.*

Follow us on [Twitter](#) for transportation-related updates and more; like us on [Facebook](#) and visit the website at [www.ddot.dc.gov](http://www.ddot.dc.gov). Visit [goDCgo.com](http://goDCgo.com) for more information on transportation options in the District.