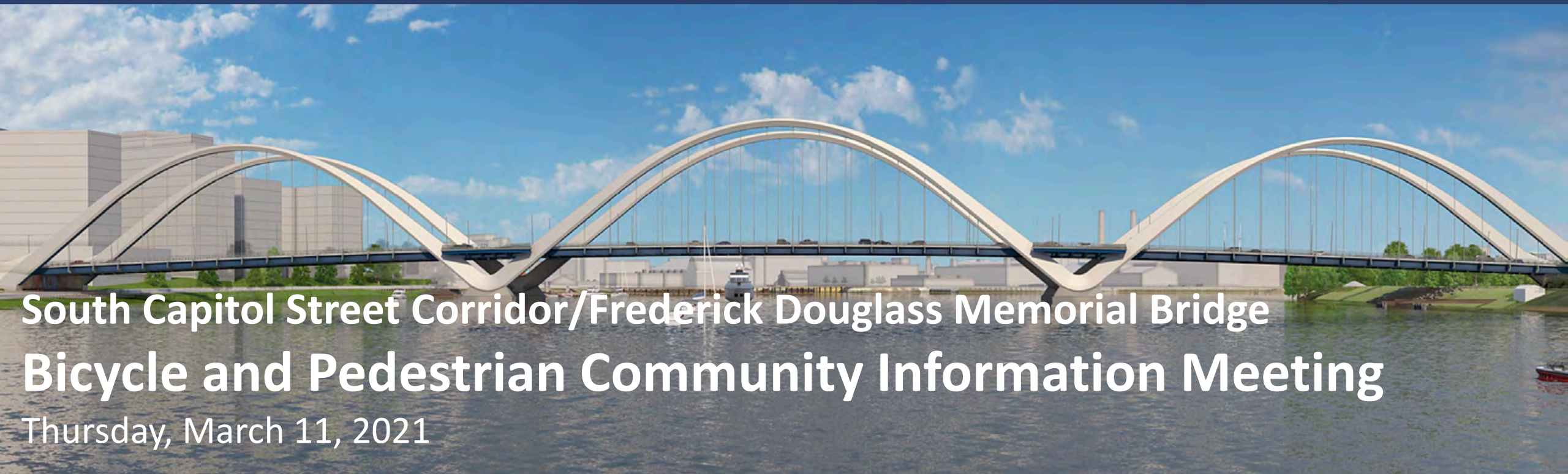




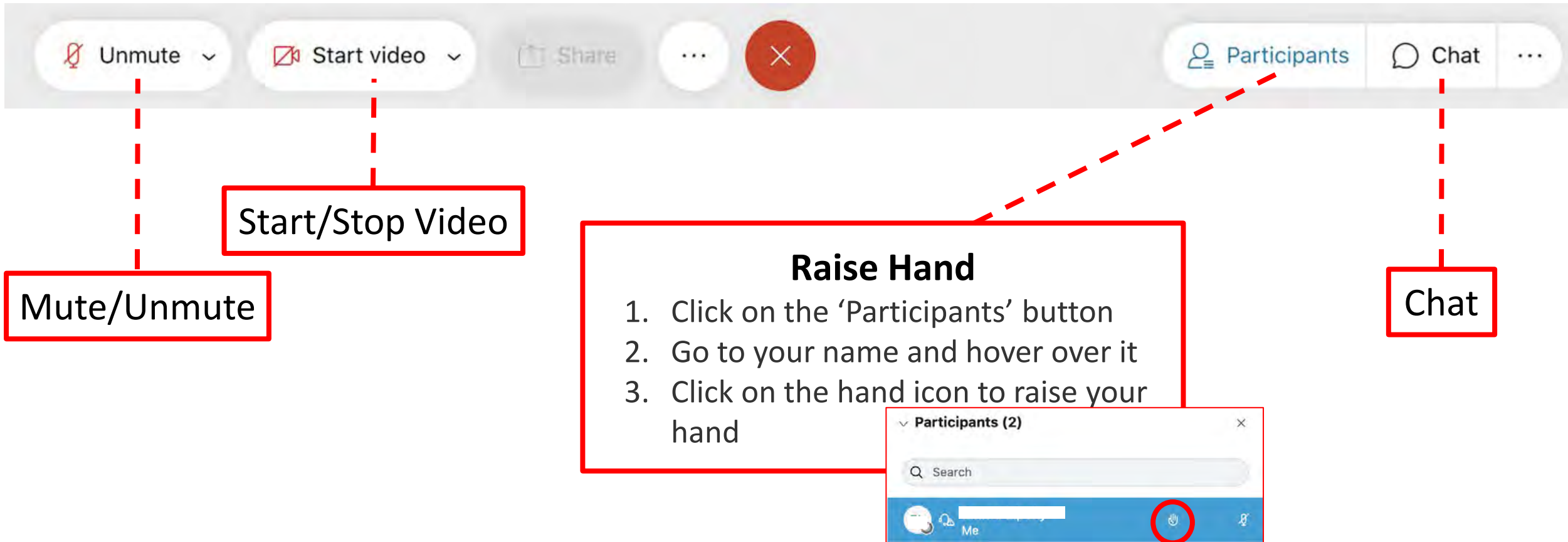
# THE NEW FREDERICK DOUGLASS MEMORIAL BRIDGE



## South Capitol Street Corridor/Frederick Douglass Memorial Bridge Bicycle and Pedestrian Community Information Meeting

Thursday, March 11, 2021

# WEBEX TECHNOLOGY REVIEW



The image shows a Webex toolbar and a participants list. The toolbar includes buttons for 'Unmute', 'Start video', 'Share', a menu icon, and a close icon. The participants list shows a search bar and a list of participants. A red dashed line connects the 'Unmute' button to a red box labeled 'Mute/Unmute'. Another red dashed line connects the 'Start video' button to a red box labeled 'Start/Stop Video'. A third red dashed line connects the 'Participants' button to a red box labeled 'Raise Hand'. A fourth red dashed line connects the 'Chat' button to a red box labeled 'Chat'. The 'Raise Hand' box contains a list of steps: 1. Click on the 'Participants' button, 2. Go to your name and hover over it, 3. Click on the hand icon to raise your hand. A red circle highlights the hand icon in the participants list.

**Mute/Unmute**

**Start/Stop Video**

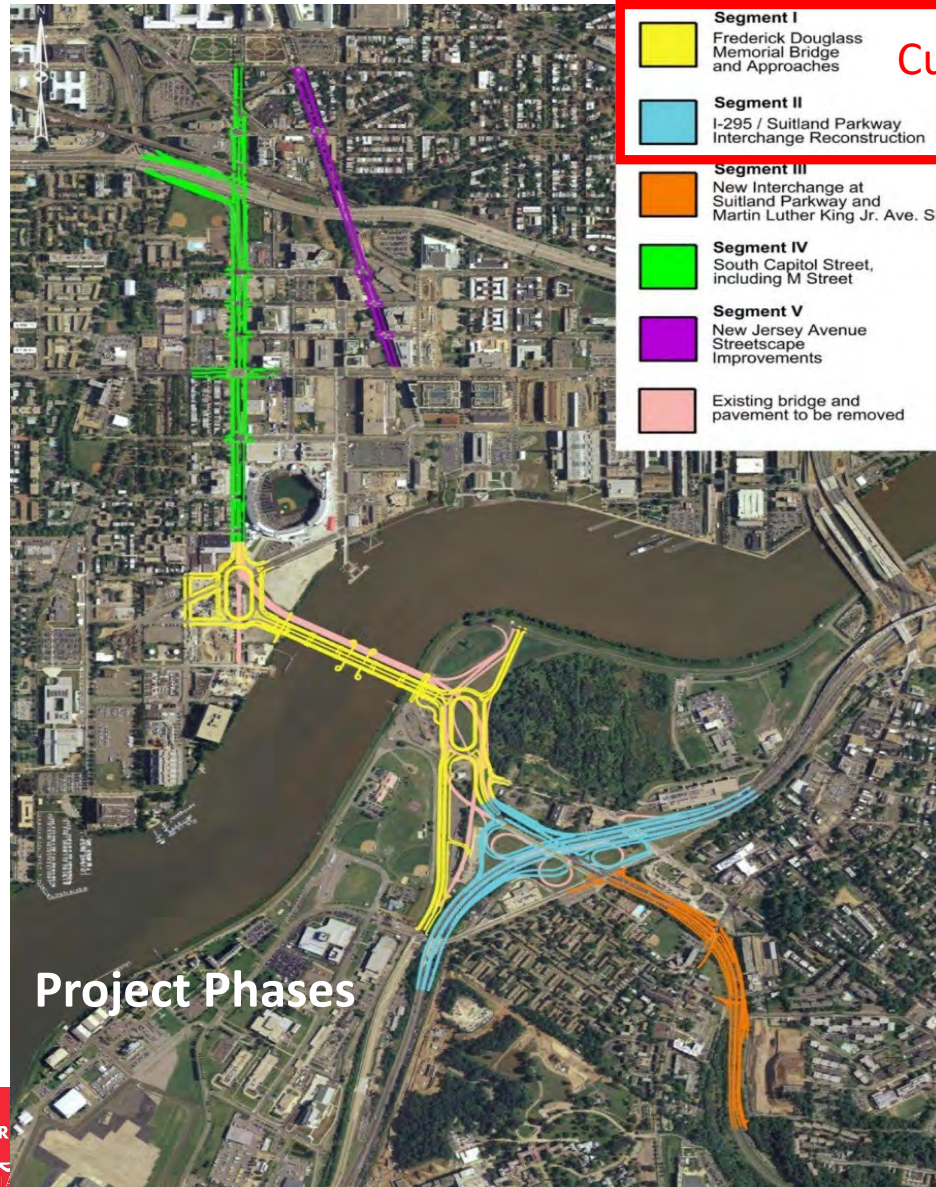
**Raise Hand**

1. Click on the 'Participants' button
2. Go to your name and hover over it
3. Click on the hand icon to raise your hand

**Chat**



# AGENDA



## Current Phase I Project

- Segment I**  
Frederick Douglass Memorial Bridge and Approaches
- Segment II**  
I-295 / Suitland Parkway Interchange Reconstruction
- Segment III**  
New Interchange at Suitland Parkway and Martin Luther King Jr. Ave. SE
- Segment IV**  
South Capitol Street, including M Street
- Segment V**  
New Jersey Avenue Streetscape Improvements
- Existing bridge and pavement to be removed

## Project Phases

- Welcome & Introductions
- Project Overview
- Project Milestones Schedule
- Project Accomplishments
- Bicycle and Pedestrian Facilities
- Project Renderings
- Recent Ped/Bike Detours
- Questions/Answers

# PHASE I PROJECT ELEMENTS

- A. Replace existing bridge with a new six lane signature bridge
- B. Construct new east traffic oval
- C. Construct new west traffic oval
- D. Reconstruct I-295 from Firth Sterling Avenue, SE to Howard Road, SE and the I-295/Suitland Parkway Interchange
- E. Enhance bicycle and pedestrian facilities
- F. Improve landscaping, drainage and stormwater management





# PROJECT MILESTONES

- FDMB Bridge Open to Traffic – Fall 2021
- Completion of the East Oval – Spring 2022
- Completion of West Oval – Spring 2022
- Completion of I-295 Corridor – Winter 2021
- Final Completion – Spring 2022

***Note: Dates are subject to change based on weather, utility work and other factors.***



# PROJECT ACCOMPLISHMENTS/STATUS

- Arch Completion – August 12, 2020
- Projected Bridge Opening – October 1, 2021





# PROJECT ACCOMPLISHMENTS

- I-295 and Firth Sterling Avenue





# PROJECT ACCOMPLISHMENTS

- I-295 and Suitland Parkway





# PROJECT ACCOMPLISHMENTS

- I-295 and Howard Road





# PROJECT ACCOMPLISHMENTS

- East Side Traffic Oval





# PROJECT ACCOMPLISHMENTS

- West Side Traffic Oval





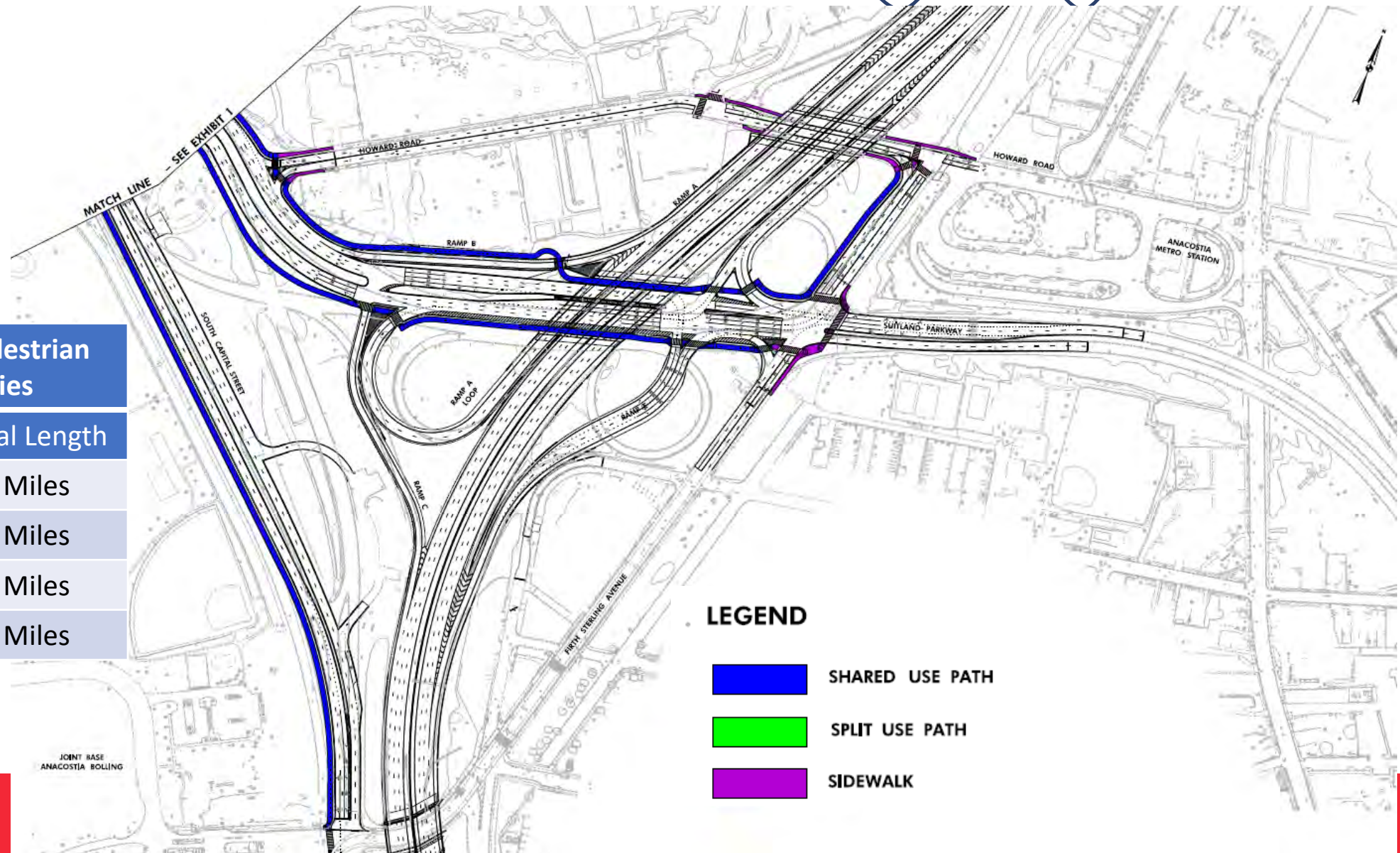
# PROJECT ACCOMPLISHMENTS

- New FDMB





# BICYCLE AND PEDESTRIAN FACILITIES



## New Project-Wide Pedestrian and Bicycle Facilities

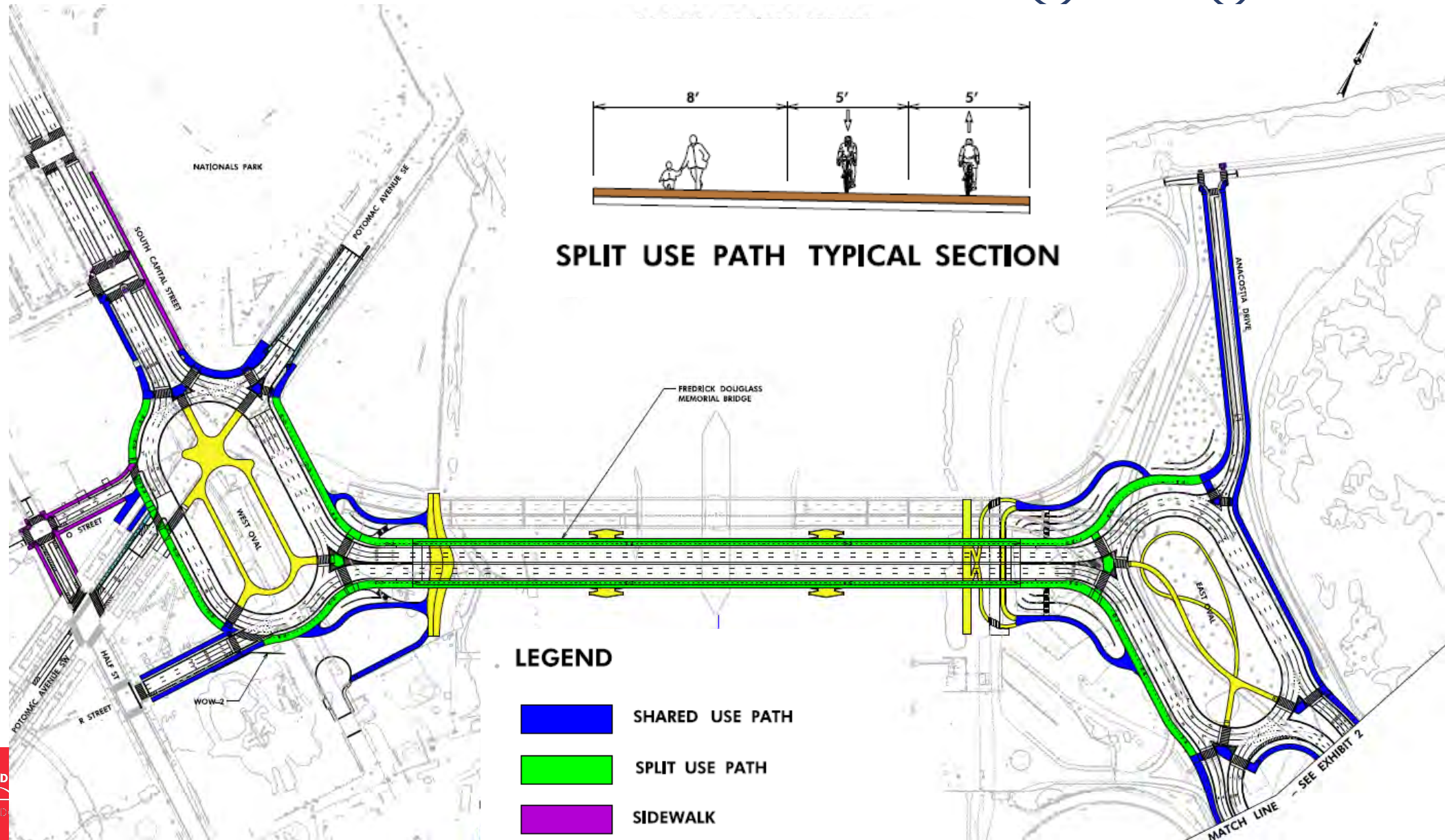
Facility Type	Total Length
Sidewalks	0.6 Miles
Shared Use Paths	2.8 Miles
Split Use Paths	1.1 Miles
Total	4.5 Miles

### LEGEND

-  SHARED USE PATH
-  SPLIT USE PATH
-  SIDEWALK

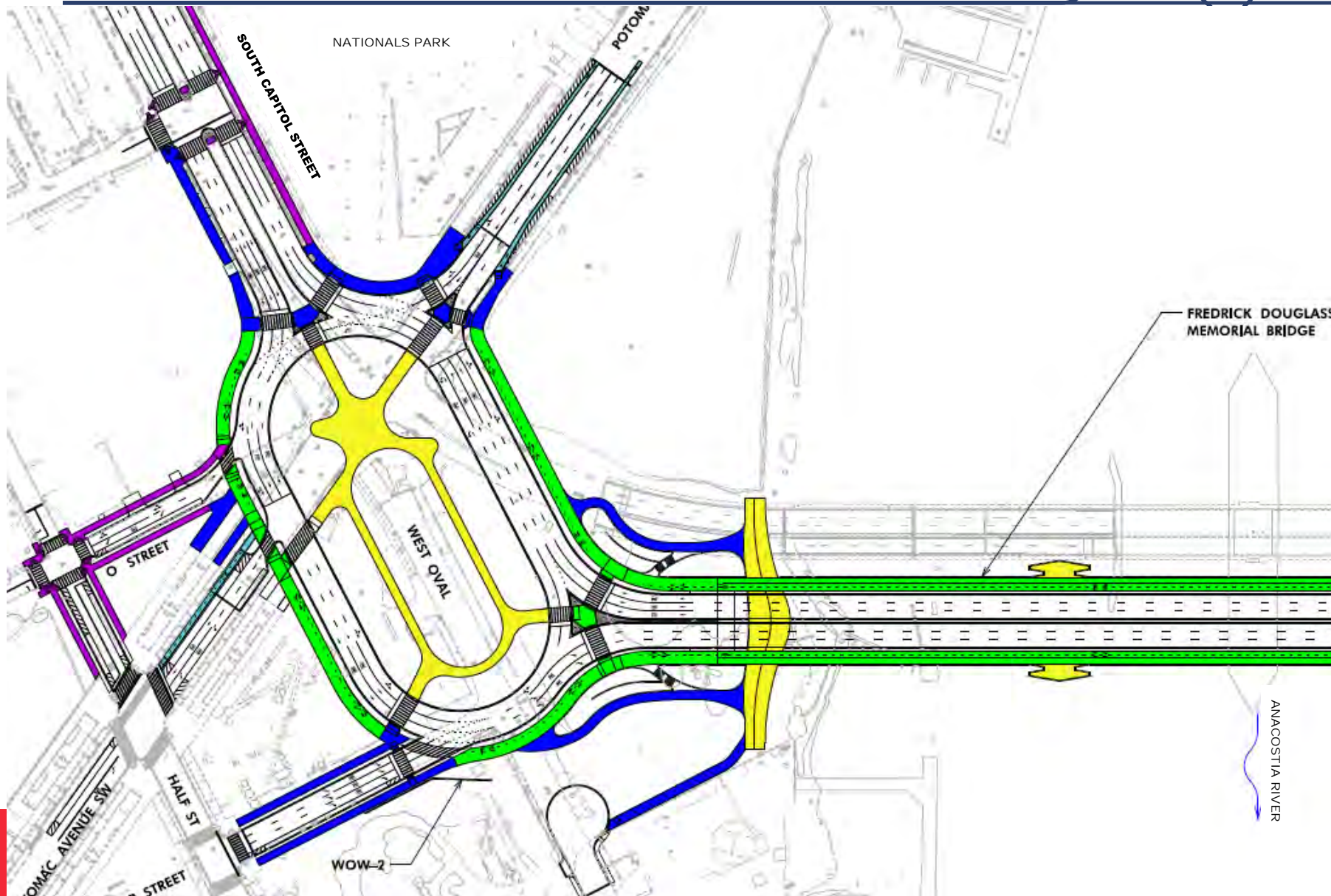


# BICYCLE AND PEDESTRIAN FACILITIES





# BICYCLE AND PEDESTRIAN FACILITIES

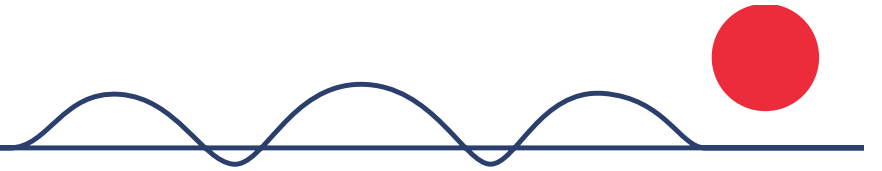


## LEGEND

- SHARED USE PATH
- SPLIT USE PATH
- SIDEWALK



# BICYCLE AND PEDESTRIAN FACILITIES





# PROJECT RENDERINGS – BRIDGE OVERLOOKS





# EAST OVAL ILLUSTRATIVE PLAN AND RENDERINGS



Potential future connection from oval to northeast

Potential location for artwork or memorial within the oval

North Gathering Area

Braided Paths

South Gathering Area

Boardwalk over Bioretention

Butterfly Garden





# EAST OVAL RENDERINGS





# EAST OVAL PLAZA RENDERINGS





# EAST ESPLANADE – RIVERWALK VIEW





# WEST OVAL – ILLUSTRATIVE PLAN AND RENDERINGS





# WEST OVAL RENDERINGS





# WEST OVAL RENDERINGS



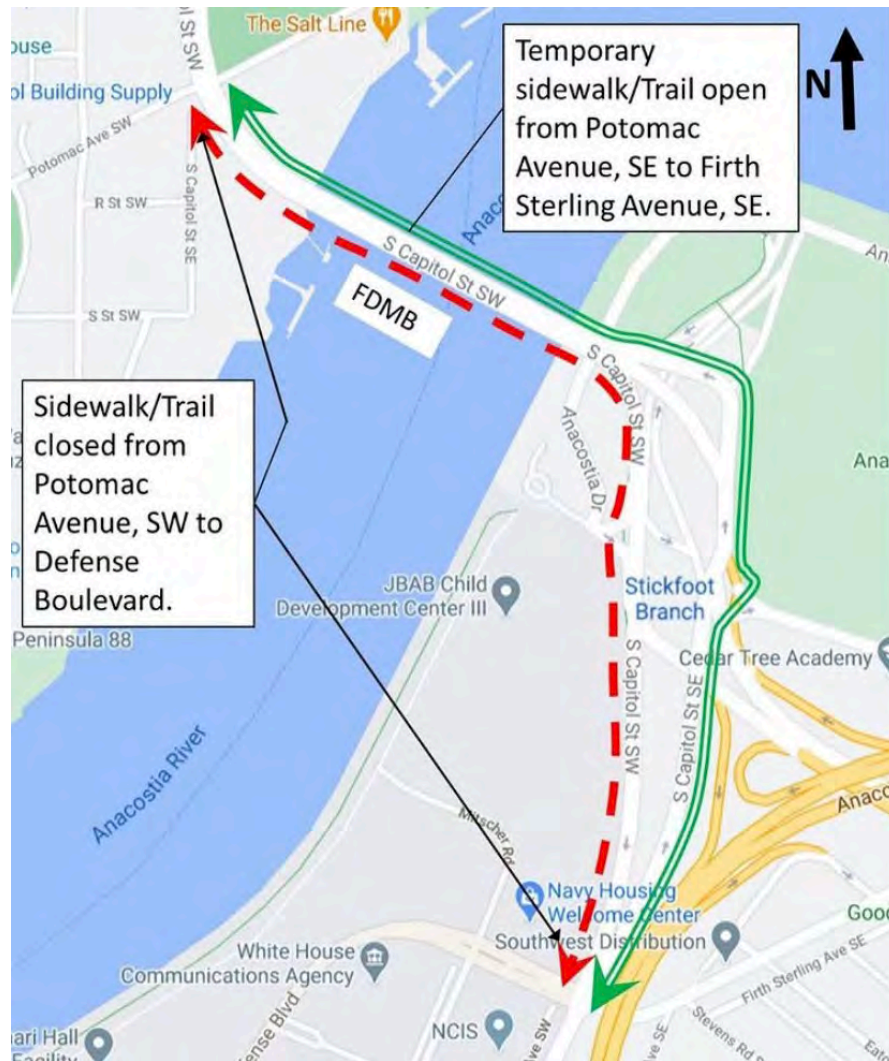


# WEST ESPLANANDE - RENDERINGS

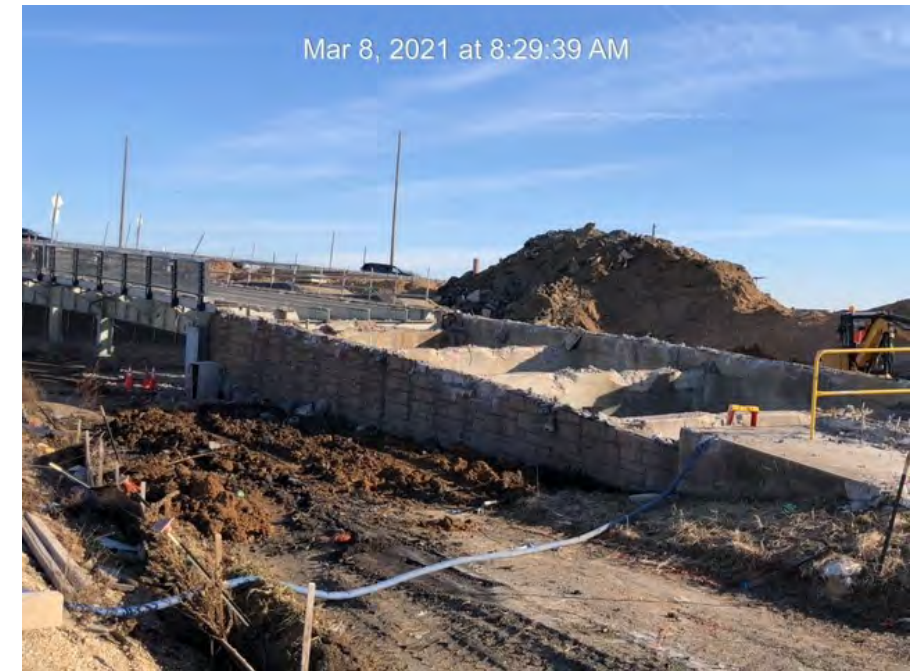




# RECENT PEDESTRIAN/BICYCLE DETOUR

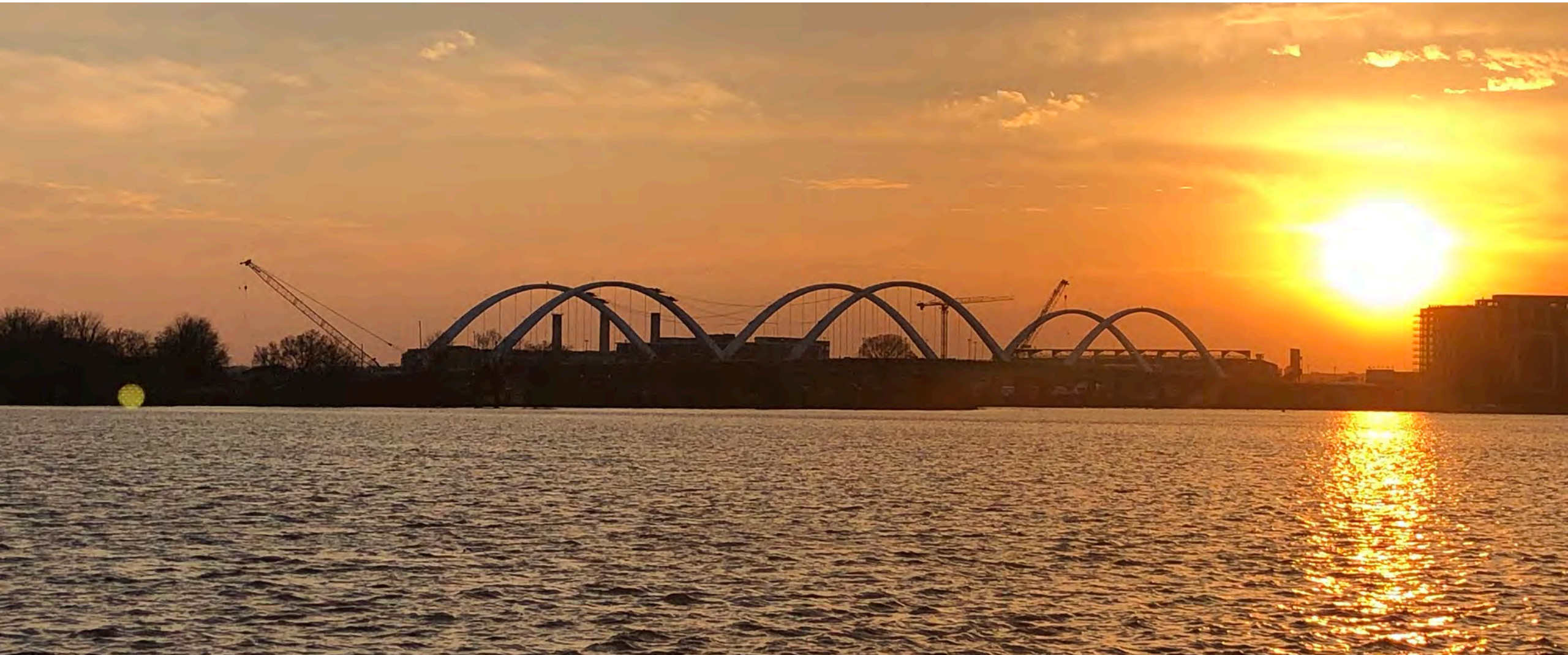


- Ped/Bike Path on Downstream (South) side of existing Bridge and along SB South Capitol Street closed March 4
- Detoured to NB South Capitol Street and Upstream side of existing Bridge
- Detour to remain in place until the new bridge reopens in early fall.





# NEW FREDERICK DOUGLASS MEMORIAL BRIDGE





For up to date traffic  
alerts and more  
information, follow us  
on social media at  
**@newfdmb** on  
Facebook, Twitter and  
Instagram.

# QUESTIONS?

## FOR MORE INFORMATION

[www.newfrederickdouglassbridge.com](http://www.newfrederickdouglassbridge.com)  
[info@newfrederickdouglassbridge.com](mailto:info@newfrederickdouglassbridge.com)