



FOR IMMEDIATE RELEASE

Sunday, February 13, 2022

Media Contacts:

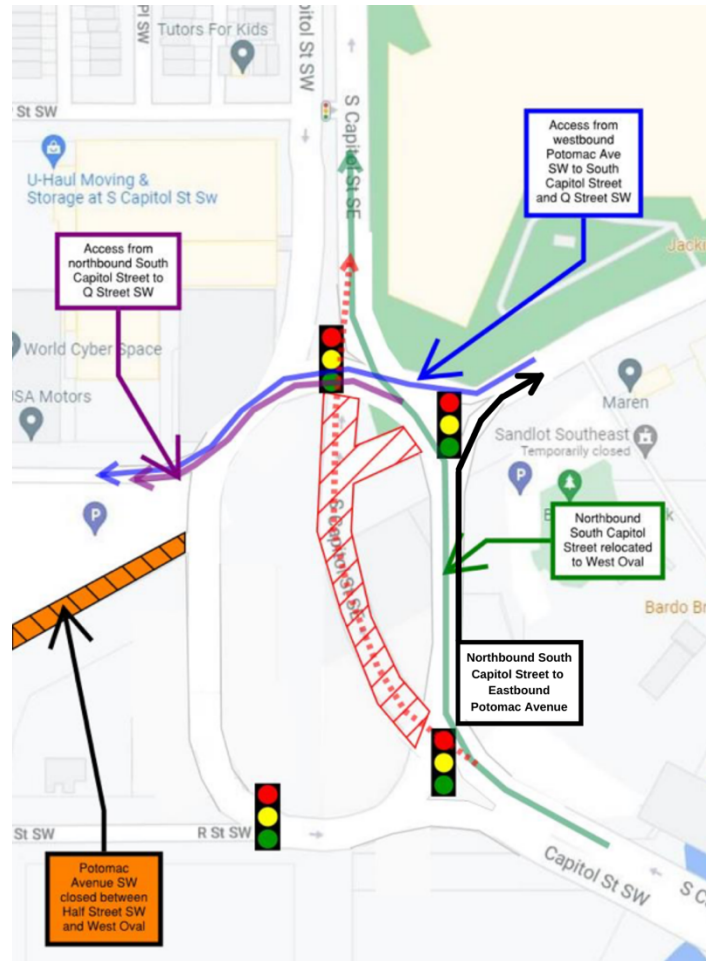
German Vigil – (202) 306-1668, german.vigil@dc.gov

Mariam Nabizad – (202) 359-2678, mariam.nabizad@dc.gov

New Traffic Pattern – South Capitol Street Northbound on Monday, February 14

(Washington, DC) - The District Department of Transportation (DDOT) will relocate the northbound lanes of South Capitol Street departing the Frederick Douglass Memorial Bridge onto the West Oval, as shown in the image below. This relocation will be in place for the morning peak period on Monday, February 14. Drivers heading northbound on South Capitol Street will encounter traffic signals entering the West Oval and at Potomac Avenue SE. Drivers will be able to access Q Street SW from northbound South Capitol Street.

New Traffic Pattern – South Capitol Street Northbound



Please observe the posted speed limit and proceed through the construction area with caution. Drivers, pedestrians, and cyclists are advised to stay alert and follow signage when traveling through this area.

These changes are necessary for construction activities associated with the South Capitol Street Corridor Project which includes construction of the New Frederick Douglass Memorial Bridge and the reconstruction of the I-295/Suitland Parkway interchange.

For more information about DDOT's ongoing efforts to improve the 295 corridors, visit www.improving295dc.com.

###

The District Department of Transportation's mission is to equitably deliver a safe, sustainable, and reliable multimodal transportation network for all residents and visitors of the District of Columbia.

Follow us on [Twitter](#) for transportation-related updates and more; like us on [Facebook](#) and follow us on [Instagram](#). Visit the website at www.ddot.dc.gov. Visit goDCgo.com for more information on transportation options in the District.